

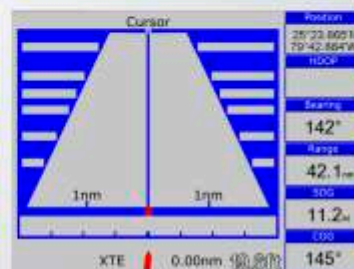
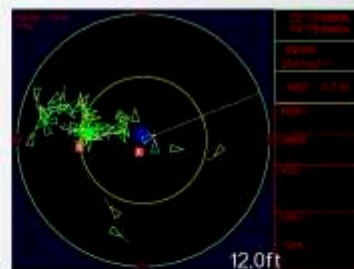
X10D

PLOTTER GPX-60 GPX-60R

www.x10d.info



- Built-in AIS Receiver (GPX-60R)
- High resolution TFT day-view LCD display
- SD-cards slot for C-Map MAX and user data
- Tide table and Celestial display
- Versatile display mode include
 - Plotter Screen
 - 3D highway
 - Nav.Data
 - Satellite Information
 - AIS Display
 - Compass Screen
 - Wind Screen
- GOTO track navigation
- Map orientation selection
- Proximity to waypoints alarms
- Perspective View
- Palette
 - Normal
 - Daylight - exposed to sunlight
 - Night - in dark environment
 - NOAA- paper chart colors -Celestial
- Wind speed and direction display by optional sensor input
- AIS guard zone with CPA and TCPA alarm



GPX-60/GPX-60R

SPECIFICATION OF GPX-60/GPX-60R

PLOTTER CHARACTERISTICS

Waypoints/icons:	12,000 waypoints with name, symbol, 10 proximity waypoint
Routes:	Up to 170 waypoints each, plus MOB and Track Navigation or Goto Track modes
Tracks:	8,000 points automatic track log; 10 saved tracks (up to 8000 track points each) let you retrace your path in both directions
Alarms:	XTE, Anchor drag, arrival, speed, voltage, proximity waypoint and time, AIS alarm.
Palette:	Normal Daylight exposed to sunlight Night in dark environment NOAA paperchart colors
Tides:	Tide data
Projection:	Mercator projection
Position format:	Lat/Lon
Basemap:	Built-in basic cartography
External Map:	SD Cards slot for C-Map MAX
User data storage:	Internal backup of user settings, or external SD-card
Plot Interval:	1s to 99h or 0.01 nm to 9.99nm
Plotting scales:	0.01nm to 1,000nm
Nav Data:	Input and output: NMEA 0183 (details on operation manual) Output for autopilot:
Perspective View:	On/Off (C-Map charts)
Celestial:	Sunrise/Sunset Moonrise/Moonset

Power Supply 10.5 to 35VDC, current drain <500mA at 12V

Physical

Size:	228mm(H)x138mm(W)x79mm(D)
Weight:	0.9kg
Display:	5.6 inches Color TFT LCD day-view 640 x 480 pixels
Waterproofing:	Display unit: IPX5 Antenna unit: IPX6
Temperature range:	Display unit: -15°C to +55°C Antenna unit: -25°C to +70°C

AIS Characteristics (GPX60R only)

Receiver x 2	(one time shared between AIS/CDSC)
Frequency :	156.025 to 162.025 MHz in 25KHz steps
Channel bandwidth :	25KHz
Channel step :	25KHz
Modulation modes :	25KHz GMSK (AIS RX) 25KHz AFSK (DSC, RX) 9600 b/s ± 50 ppm (GMSK) 1200 b/s ± 50 ppm (FSK)
Bit rate :	
RX sensitivity :	Sensitivity - 107dBm 25 KHz Message error rate less than :2% Co-channel 10dB IMD 62dB Blocking <-84dB

EQUIPMENT LIST

- Standard
1. Display unit
 2. GPS Antenna unit with 10m cable
 3. Operator manual
 4. Installation materials and standard spare parts



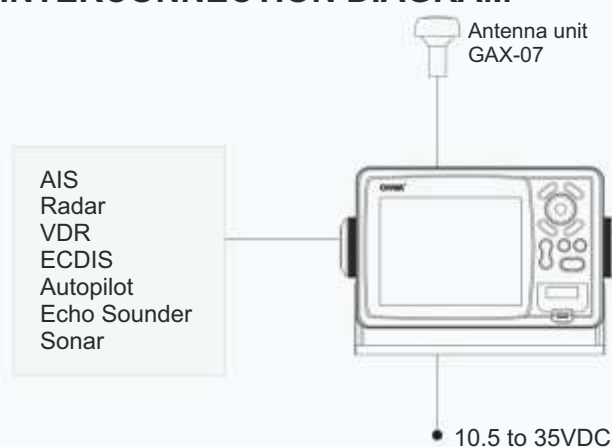
Extend Horizons LLC
27 Old Hopkinton Rd.
Westerly, RI 02891
Tel. +1 401-525-1268

E-mail: info@x10d.info - <http://www.x10d.info>

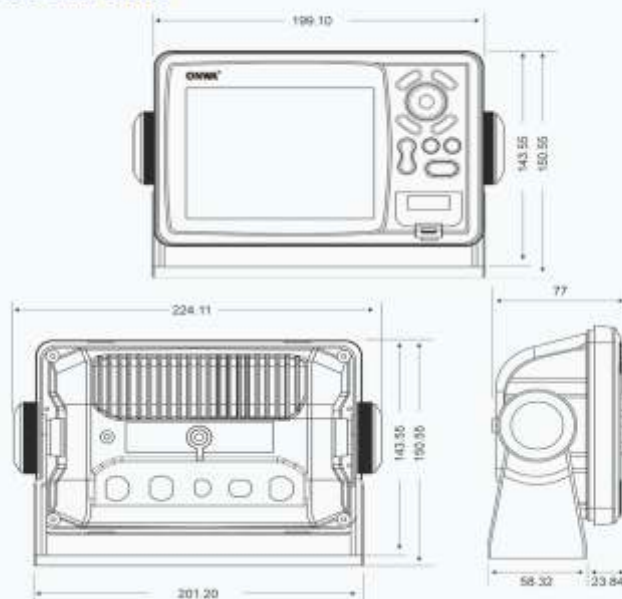
GPS RECEIVER CHARACTERISTICS

Receiver:	50 parallel channel GPS receiver continuously tracks and uses up to 50 satellites to compute and update your position
Acquisition times:	Cold start: 27 seconds average Warm start: 27 seconds average Hot start: 1 second average
Update rate:	1/second, continuous
Accuracy:	Position: 2.5 meters(95%) without S/A Velocity: 0.1 Meter/sec without S/A Time: ±100ns synchronized to GPS time
Dynamics:	Altitude: 50,000m Max Velocity: 500 m/s Acceleration: 4g Max
Datum:	WGS 84 & Others
Interfaces:	NMEA 0183 input, RS232 output
Antenna:	GAX-07

INTERCONNECTION DIAGRAM



DISPLAY UNIT



Design and specifications can change without previous notice